

Franklin County Crisis Care Center

Creating a New Approach to Crisis Care

The Alcohol, Drug and Mental Health Board of Franklin County (ADAMH) is partnering with community stakeholders to address the continuum of crisis care in our community. The cornerstone of this continuum is the development of a new crisis center that will be the central and preferred destination in Franklin County for adult mental health and addiction crisis needs. The crisis center will provide a safe and secure location offering a full array of services with integrated peer support at all levels. Most importantly, the crisis center will offer a no-wrong-door approach to ensure any adult arriving at the crisis center receives services. This new resource is intended to benefit everyone from individuals in crisis and their families to the overcrowded hospitals and first responders currently stretched to their limits.

A welcoming and safe place where community members will be helped and supported during times of crisis.

- Centrally located in the West Edge area at 465 Harmon Avenue
- Open 24 hours/7days a week
- Serving adults age 18+, regardless of immigration, residency or insurance status
- Includes public walk-in entrance and a separate entrance for first responders
- Opening in 2025



Public Entrance:

Natural light filters in the building entrance to create an atmosphere of hope and healing. Services also include a family center with resources about mental health and addiction and opportunities to connect with family support groups in the community.



Care Units:

Care units are designed to provide a bright, home-like environment with comfortable seating and an open care desk to enhance engagement between staff and guests.

Community Needs

21% of Franklin County's 1.3 million residents will experience mental illness in a given year. 10% will abuse or be dependent on drugs or alcohol.

30,000 mental health crisis episodes are treated in Franklin County annually (mostly in hospital emergency departments).

23% Franklin County's population is expected to grow by 8% and see a 23% increase in the need for mental health and addiction services over the next 10 years.

Revised 12/05/22

Franklin County Crisis Care Center

A Patient-Centered Approach

The Franklin County Crisis Care Center will integrate recovery, clinical and medical services together to provide comprehensive patient-centered care.

- Levels of Care
- Services

24/7 Walk-in

Support for those not yet in crisis with 24/7 access and linkage to community providers.

Pharmacy Services

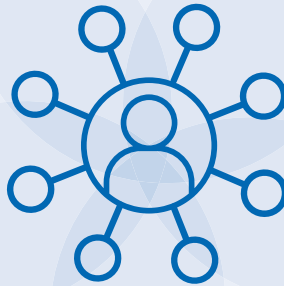
Pharmacy services for walk-in clinic and the on-site service units including automated medication dispensing system to increase safety and efficiency.

Medical Services

Urgent care level of medical service to avoid hospital transfers when possible.

23-hour Observation

A safe setting for treatment of those in immediate crisis. Admissions may be on a voluntary or involuntary basis.



Inpatient

A total of 16 beds for stays 24 hours and longer with capacity to allow flow of individuals out of the observation unit.

Substance Use Disorder Treatment Services

Including detox, initiation of medication-assisted treatment (MAT) and linkage to ongoing care.

Family Support Services

Support for families, partners and friends who may come in with a loved one in crisis.

Community Services

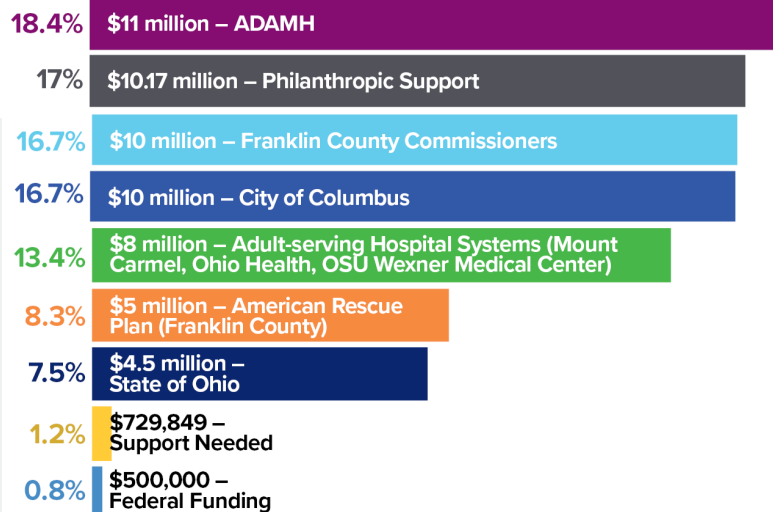
On-site linkage to community mental health and substance use treatment providers, as well as other critical services such as available housing.

Community Support

As of August 2023
 \$59.9 million – Projected Construction Costs
 \$59.17 million – Committed from Partners

Philanthropic Support

- Osteopathic Heritage Foundations - \$2.5 million
- Tad and Nancy Jeffrey Fund - \$2 million
- American Electric Power Foundation - \$1 million
- CareSource Foundation - \$1 million
- Nationwide Foundation - \$1 million
- Robert F. Wolfe and Edgar T. Wolfe Foundation - \$1 million
- The Columbus Foundation - \$500,000
- Columbus Medical Association Foundation - \$500,000
- Crane Group - \$200,000
- Cardinal Health Foundation - \$100,000
- CoverMyMeds - \$100,000
- Huntington Foundation - \$100,000
- Ingram-White Castle Foundation - \$100,000



Project Team

Hammes
Healthcare

nbbj

CK

ELFORD



GINGER
GUNNINGHAM
ASSOCIATES
LLC
Business Development
Consulting Services

RI
INTERNATIONAL